

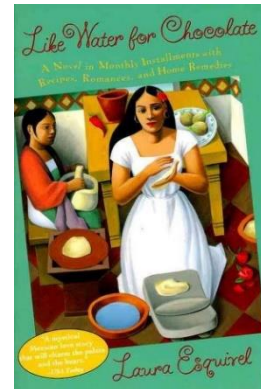
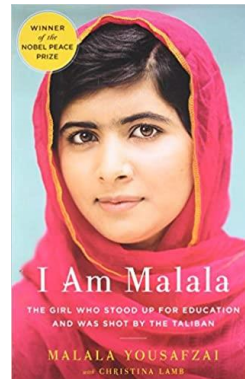
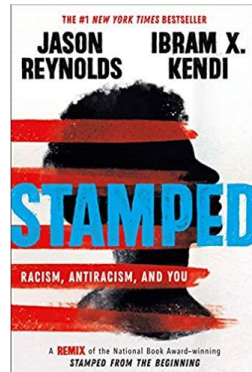
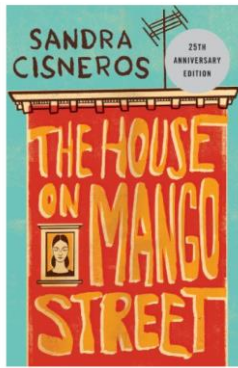
Rising Sophomores / 10th Grade
Required Summer Reading Assignment 2023
English 2 (Proviso East / Proviso West)
IH World Literature (PEMSA / PWMSA / PMSA)

Due Date: Friday, September 8th

First Submission = 10 points (Summer Reading Category)
Revised/Final Submission with Teacher Feedback & Support = 30 points

Welcome to 10th grade English! For your required summer reading assignment, you will need to check out from Proviso or a local library one of the novels below to read this summer. You may also choose to purchase the book from Amazon, Barnes & Noble, or another book vendor. We will be using this book during the first few weeks of school, so be sure to bring it with you to class.

1. *The House on Mango Street*, by Sandra Cisneros (ISBN: 9780679734772)
2. *Stamped: Racism, Antiracism and You*, by Jason Reynolds and Ibram X. Kendi (ISBN: 9780316453691)
3. *I Am Malala*, by Malala Yousafzai and Christina Lamb (ISBN: 9780316322409)
4. *Like Water for Chocolate*, by Laura Esquivel (ISBN: 9780365420174)



Reading Journal

- Choose 10 chapters/sections from the book you selected to write about in journal entries. Each journal entry should be at least four sentences and no more than eight sentences in length. Individual work is expected.
- Arrange your entries in the order the chapters/sections appear and be sure to label each journal entry with the page number(s) that inspired your observations and inferences.
- Your journal should not summarize the plot, but instead focus on making deeper connections as follows:
 - Ideas or themes that the chapter inspires or makes you think about
 - Connections that you can make to other texts or artistic mediums
 - Thoughts regarding how the character(s) are changing or remaining the same through their actions, words, and emotions
 - The language used--tone, word choice, style, any literary devices you notice, the way the author writes, the structure of the text, etc.
 - Cultural connections--thoughts on how the story relates to society, culture, identity

ELA Common Core Standards: Grades 9-10

Reading Literature

Key Ideas and Details

9-10.RL.1 – Cite strong and thorough textual evidence to support analysis of what the text says explicitly as well as inferences drawn from the text.

9-10.RL.2 – Determine a theme or central idea of a text and analyze in detail its development over the course of the text, including how it emerges and is shaped and refined by specific details; provide an objective summary of the text.

9-10.RL.3 – Analyze how complex characters (e.g., those with multiple or conflicting motivations) develop over the course of a text, interact with other characters, and advance the plot or develop the theme.

Craft and Structure

9-10.RL.4 – Determine the meaning of words and phrases as they are used in the text, including figurative and connotative meanings; analyze the cumulative impact of specific word choices on meaning and tone (e.g., how the language evokes a sense of time and place; how it sets a formal or informal tone).

9-10.RL.5 – Analyze how an author's choices concerning how to structure a text, order events within it (e.g., parallel plots), and manipulate time (e.g., pacing, flashbacks) create such effect as mystery, tension, or surprise.

9-10.RL.6 – Analyze a particular point of view or cultural experience reflected in a work of literature from outside the United States, drawing on a wide reading of world literature.

Integration of Knowledge and Ideas

9-10.RL.7 – Analyze the representation of a subject or a key scene in two different artistic mediums, including what is emphasized or absent in each treatment (e.g., Auden's "Musée des Beaux Arts" and Breughel's "Landscape" with the "Fall of Icarus").

Learning Objectives

Students will be able to:

- Make inferences from the text in order to analyze a literary text.
- Determine a theme or central idea of a text in order to analyze its development over the course of a literary text.
- Analyze how complex characters develop over the course of a text in order to develop the theme.
- Determine meanings of words and phrases in order to analyze their impact on the meaning and tone.
- Identify an author's choices in text structure, sequence, and time in order to analyze the effect created.
- Analyze cultural experience reflected in a work of literature in order to identify its effect on the reader.
- Cite textual evidence in order to support inferences drawn from the text.

To find more information including mini lessons on each book choice, please visit:

<https://www.pths209.org/summerreading>

To check on book availability for checkout from Proviso, please contact: Ms. Angela Marino, District Coordinator for ELA and the Arts at amarino@pths209.org or 708-338-5939 and Ms. Greenhow, Administrative Assistant at jgreenhow@pths209.org or 708-338-5929.

If you would like assistance with the summer reading assignment, please contact:

Ms. Morgan Sloma, ELA Teacher at msloma@pths209.org
or Dr. Anne Gottlieb, ELA Teacher at agottlieb@pths209.org

